

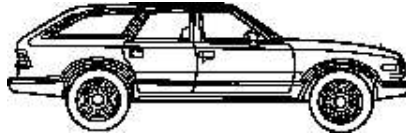
Parts List

ENGINE—4.2L (258 cid) I-6 w/Carter BBD

Distributor rotor	B-W D197
Distributor cap	B-W C182
Ignition wires	Champion 60006
Spark plugs	Bosch 4203 (FR9HP)
Oil filter (1980-82)	Pur L20033 Fram PH25,DG25 Lee LF-24,LF24HP STP S-024,STP-24 Fram PL-20033 Wix 51258
Oil filter (1984-86)	Pur L24007 Fram PH3675 Lee LF-922HP NAPA 1522 AC PF-58 WIX 51522
Oil filter (1987-88)	Pur L14619 Fram PH3985 Lee LF2801 NAPA 1626 AC PF-970 WIX 51626
Fuel filter	Pur F21117 Fram G3583
Air filter	Fram CA184 Pur A30045 Lee AF184 Motorcraft FA-1R Wix 42054 ACC 71104 Pur B13153
Breather filter	Motormite 96077 NAPA 825-6029
Fresh air intake hose	Motormite 96024, 96049
Carb preheater hose	Pur B40015
Carbon canister filter	NAPA/NGA G-26827
Carb filter	B-W VC426
Choke pull-off	B-W TH418
Choke thermostat	Dayco 17465
Belt, ps/fan	Dayco 15430
Belt, alt/fan	Dayco 15270+
Belt, ps/smog pump	Road King 57017 (13A1450)
Belt, ac	Road King 29013 (10A0735) NAPA 7290
Belt, ac to alt	Dayco (B)71384
Radiator hose, upper	Dayco (C)70743
Radiator hose, lower	Stant 11329
Radiator cap (13 lb.)	Stant 59359
Thermostat (195°)	Felpro 35024
Water outlet gasket	B-W WT398 NAPA TS6655
Temp sensor (to gauge)	Mopar 33001979
Temp switch (to computer)	Stant 11085
Oil filler cap	Motormite 04103 NAPA 610-1331
Throttle cable	Felpro 5198
Air cleaner gasket	Holley 64-1591
Carb	Felpro 60391
Carb gasket (2)	B-W 10706B Hygrade 1207B NAPA/Echlin 2-5671C
Carb rebuild kit	B-W CF280B Hygrade FL3
Carb float	B-W 41249
Fuel pump	Felpro VS50244R (neoprene)
Valve cover gasket	Felpro VS50244C (cork, replaces 8053050)
Manifold gasket (pair)	NAPA (NGA) MS-15510
Alternator (63 amp)	Prostart* 7127-9M

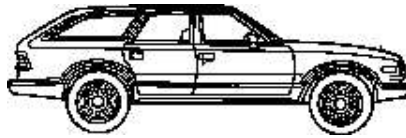


Eagle



EMISSIONS CONTROLS

PCV	Pur PV1006
PCV grommet	Motormite 42059
EGR	Mopar J3241727 B-W EGR927A (Rochester BSR 17082793)
EGR gasket	NAPA G26315
Oxygen sensor	B-W OS700 Bosch 12908
Ported vacuum switch	B-W EC920
Ported vacuum switch	B-W EC945
Manifold tube check valve	Mopar J3233960
Manifold tube	
81-82 (and 83 export) only	Mopar J3240558
Manifold tube bolts (6)	Mopar J3229457



Part Numbers

Air Injection pipe	
Downstream	Mopar 33000608
Upstream	Mopar 33000611
Air Injection Pipe Clamp	Mopar 33000871
Air Injection Valve(s)	Standard Auto Parts AV-1 or Neihoff FE-479A (Cut flared rubber hose off just above valve...) (Possible NAPA MPF329000 or CRB229000)
Battery to Solenoid cable	NAPA 711034
Battery to Ground cable	NAPA 713634 IS WRONG! (26 inch is about right...)
Belt, A/C to Alt	NAPA 7290
Belt Fan/ PS Pump	NAPA 9465
Belt, A/C	NAPA 9570 (Just a bit long in the case of my '84)
Carb Base Gasket	NAPA G-26827
Carb Air Cleaner gasket	NAPA G-25936
Catalytic Converter	NAPA 15181 (Universal fit)
Converter front pipe	NAPA 41309
Converter rear pipe	NAPA 41320
Converter front flange	NAPA 31910
Converter Gasket	NAPA 31519
Converter air inlet adaptor hose	WAL 35574 (Walker?)
Catalytic Converter	MOPAR 33000626 (\$685 in th '90's!)
EGR Gasket	NAPA G-26315
Exhaust Pipe - Manifold to Converter	NAPA 44887 MOPAR 893300065o (stamped in the pipe - the last digit looked like a small letter "o", not a zero.)
Fan Blower Motor	NAPA BK 6551332
Fan Blower Wheel	NAPA BK 6551404
Flex Plate	NAPA 600-5007
Fuel Pump gasket	NAPA D-27094
Front Driveshaft U-Joints	NAPA NUJ-369
Lower Radiator Hose	NAPA 7651
Oxygen Sensor	Bosch 12908
Oil Drain Valve	Fumoto FT101 (check number)
Oil Pan Gasket Set	NAPA NGA OS-30990 (6 pieces, mostly cork, sucks)
Oil Pan Gasket	
One piece - Silicone rubber	MOPAR 04713224 (Expensive, worth every cent, works GREAT!)
Oil Screen / pickup	Melling 81-AS2
Oil Screen Installation Tool	NAPA 301-1350 (<u>Must</u> Have to install screen / pickup tube)
Speedometer Cable - Upper	Belkamp 615-1602 (For 1982; Later models have a different (longer) cable)
Timing Case Gasket set	NAPA JV-878
Temp switch (to computer)	NAPA TS5019
Thermostat-195 degree	Robertshaw 330-195 "balanced design"